

Installation Instructions for Stronghold Leversets

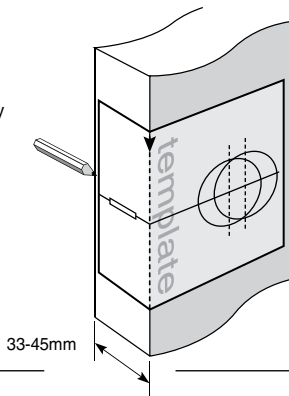
To suit door thickness of 35mm to 45mm.

Step 1.

Mark Door

Place template on outside of door with height centre line approximately 97cm from floor. Determine backset length and mark holes as shown for either a standard 60mm (2 3/8") backset or optional 70mm (2 3/4") backset (purchased separately). Measure door thickness and mark centre. Drill 23mm (15/16") latch hole.

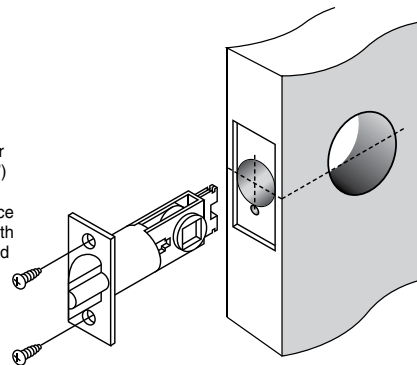
Note: it is important to drill this hole squarely.



Step 2.

Drill 2 holes and install latch

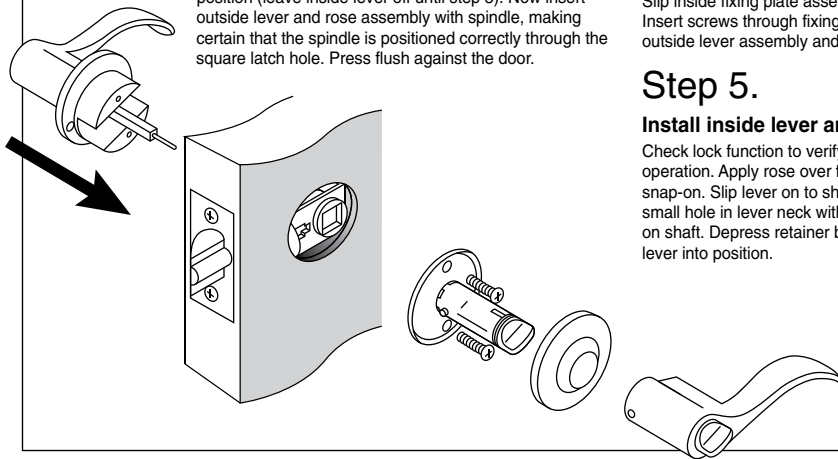
Drill a 42mm (1 5/8") hole (optional up to 54mm (2 1/8") hole) through door face. Drill a 23mm (15/16") hole in the centre of door edge. With a chisel, mortice for latch face until flush with door edge. Install latch and tighten screws.



Step 3.

Install outside lever and rose assembly

Check outside lever is oriented correctly. If not, you will need to swap levers. To do this, remove the lever from outside and inside assembly shafts by depressing retainer button and pulling each lever away. Re-attach correct lever to outside assembly shaft by aligning small hole in lever neck with retainer button on shaft. Depress retainer button and push lever back into position (leave inside lever off until step 5). Now insert outside lever and rose assembly with spindle, making certain that the spindle is positioned correctly through the square latch hole. Press flush against the door.



Step 4.

Install inside fixing plate assembly

If not already done, remove inside lever from inside assembly shaft by depressing retainer button and pulling lever away. Unclip and remove rose from fixing plate assembly. Slip inside fixing plate assembly over spindle. Insert screws through fixing plate and into outside lever assembly and tighten evenly.

Step 5.

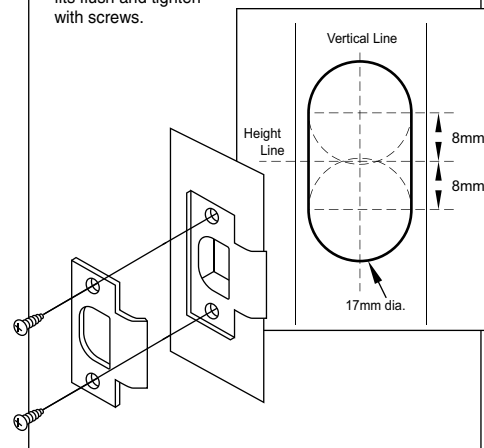
Install inside lever and rosette

Check lock function to verify satisfactory operation. Apply rose over fixing plate and snap-on. Slip lever on to shaft by aligning small hole in lever neck with retainer button on shaft. Depress retainer button and push lever into position.

Step 6.

Install strike plate

Make same vertical centre line and height line from the door to the jamb. Mark the centre of the jamb and drill two 17mm holes 8mm above and below height line 17mm deep. Chisel out edges as shown below. Continue with chisel, mortice jamb until strike plate fits flush and tighten with screws.



Drill 23mm (15/16") hole at centre of door edge

Mark centre-line of latch hole

FOLD HERE

Fit here on door edge

Fit here on door edge

Drill 42mm* (1 5/8") hole

*Optional hole 54mm (2 1/8") dia.

BACKSET 60mm (2 3/8")

BACKSET 70mm (2 3/4")

Gainsborough

Gainsborough Hardware Industries Limited,
Melbourne, Australia. A.B.N. 25 004 792 269
www.gainsboroughhardware.com.au

Installation template for Stronghold lever set

